



PROJECT
A40 SMART CORRIDOR

PROJECT NUMBER
 60615257

CLIENT
OXFORDSHIRE COUNTY COUNCIL
 County Hall, New Road
 Oxford, OX1 1ND
 Tel: 01865 792422
 www.oxfordshire.gov.uk

CONSULTANT
 AECOM I&E Ltd.
 AECOM House, 63-77 Victoria Street
 St Albans, Herts AL1 3ER
 Tel: 01727 535000
 www.aecom.com

NOTES

- DUALLING SCHEME EXTENTS
- INTEGRATED BUS LANES SCHEME EXTENTS
- DUKE'S CUT IMPROVEMENTS SCHEME EXTENTS
- PARK AND RIDE BOUNDARY AS PREVIOUS PLANNING APPROVAL REF: R3.0557/19
- RED LINE BOUNDARY
- LAND IN OWNERSHIP OF OCC
- LAND OWNED BY OCC THAT CROSSES RED LINE BOUNDARY
- PROPOSED COMPOUND AREA

FOR PLANNING

ISSUE/REVISION

I/R	DATE	DESCRIPTION
P01	05/11/21	FIRST ISSUE
P02	12/11/21	FOR APPROVAL
P03	17/11/21	ISSUED FOR PLANNING
P04	03/12/21	OCC/IGH COMMENTS ADDRESSED
P05	15/12/21	VALIDATION COMMENTS

KEY PLAN



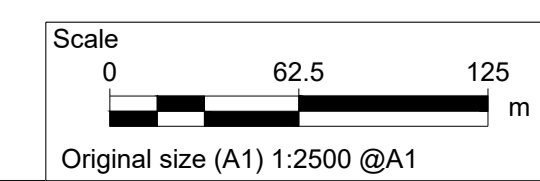
SHEET TITLE

**A40 PRELIMINARY DESIGN
 SITE PLAN
 SHEET 6 OF 7**

SHEET NUMBER

Project Number: A40 - ACM - 01
 Originator: ALL_ZZ_ZZ_ZZ -DR -C -0007
 Volume: P05
 Location: I Type I Role I Number

Reproduced from the Ordnance Survey mapping with the permission of the Controller of Her Majesty's Stationary Office © Crown Copyright. Unauthorised reproduction infringes Crown Copyright, and may lead to prosecution or civil proceedings. Oxfordshire County Council Licence No 100023343.



This drawing has been prepared for the use of AECOM's client. It may not be used, modified, reproduced or relied upon by third parties, except as agreed by AECOM or as required by law. AECOM accepts no responsibility, and denies any liability, whatsoever, to any party that uses or relies on this drawing without AECOM's express written consent. All measurements must be obtained from the stated dimensions.